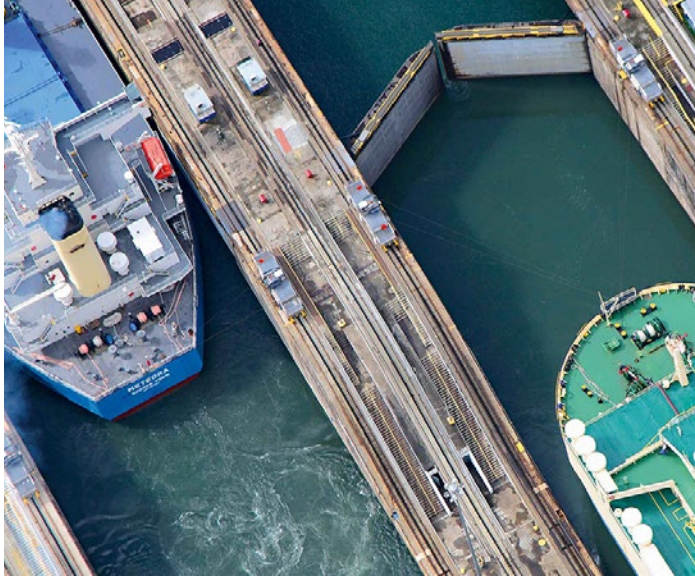


kelso coatings



Client

Panama Canal Authority

Location

Panama Canal, Panama

Project type

Repairing & Waterproofing

Panama Canal

Cold Joint Application

PROBLEM

The Panama Canal is an artificial 77 km waterway in Panama that connects the Atlantic Ocean with the Pacific Ocean. The canal cuts across the Isthmus of Panama and is a conduit for maritime trade. The American Society of Civil Engineers has called the Panama Canal one of the seven wonders of the modern world, and is considered a landmark project.

The Panama Canal Authority is the government agency in Panama responsible for the operation and management of the Panama Canal. They bear exclusive responsibility for the operation, administration, management, preservation, maintenance, and modernization of the canal.

Kelso was invited by the Panama Canal Authorities to inspect various areas in their facilities where there was constant water infiltration occurring within their 100 year old structures. Kelso was able to demonstrate the capabilities of the CN2000 waterproofing system by terminating their most critical areas.



SOLUTION

Due to the performance of the extreme hydrostatic pressure, which CN2000 was able to successfully terminate, The Panama Canal Authorities recognized the superior capabilities to these ongoing water infiltration issues. Kelso was requested by the Authorities to train the Panama Canal's crew for ongoing water infiltration issues.

Areas that have been treated with the CN2000 crystalline waterproofing system will be dry for many more years, while at the same time saving the Authorities a substantial amount of money.